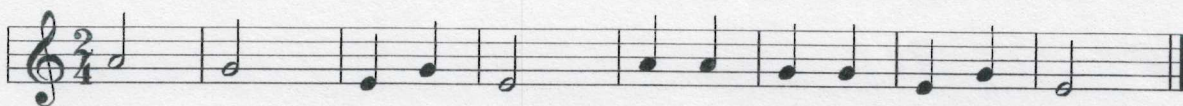
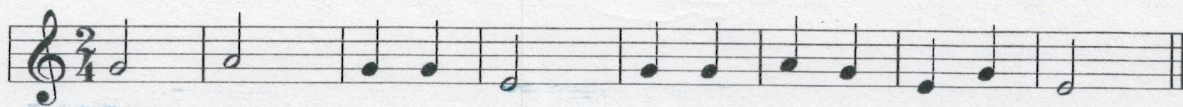
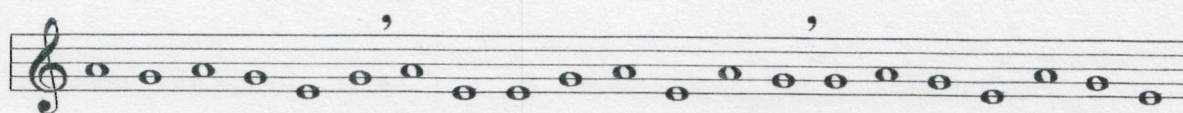
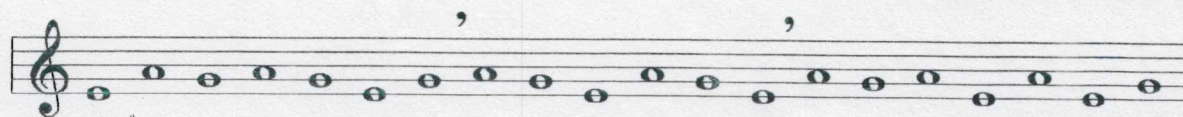
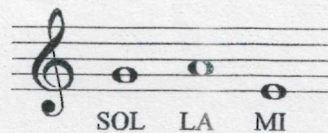
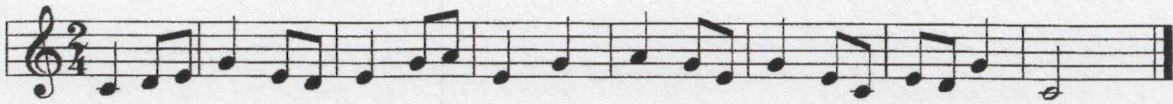
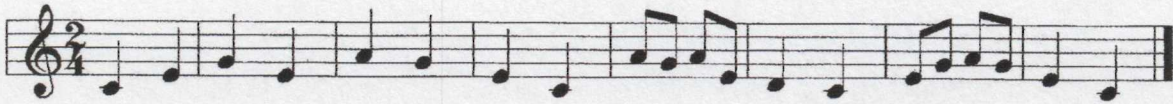
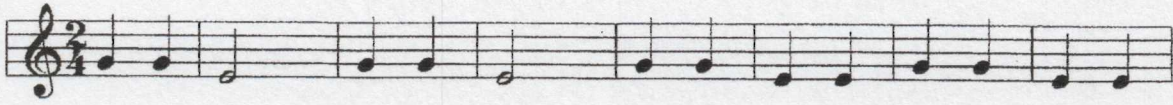
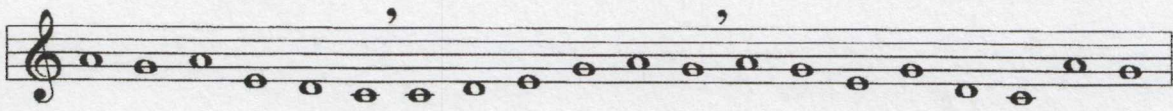
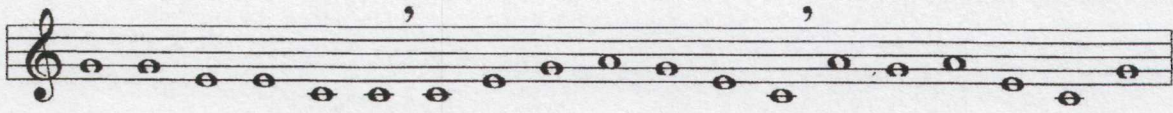


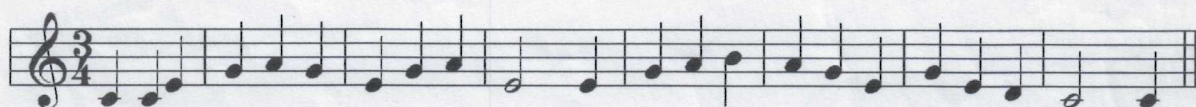
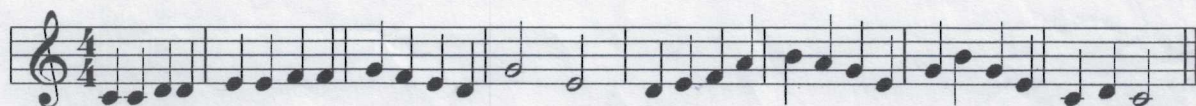
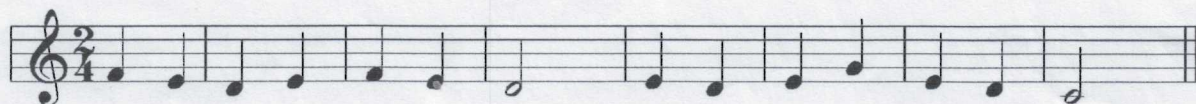
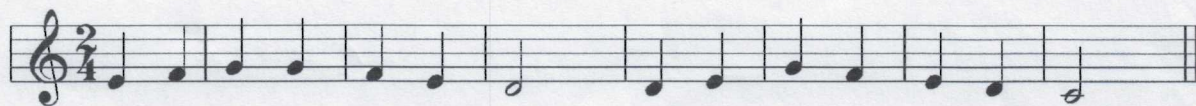
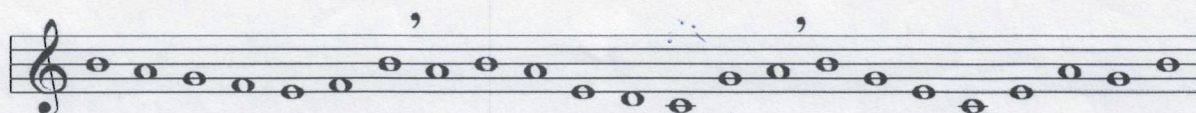
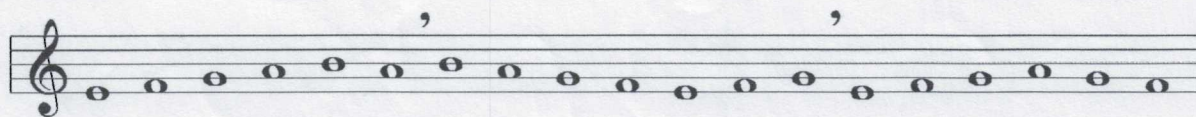
Lectura melódica



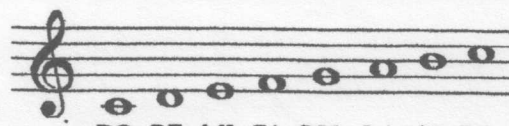
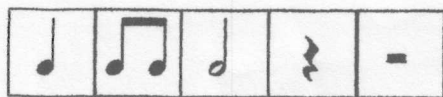
Lectura melódica



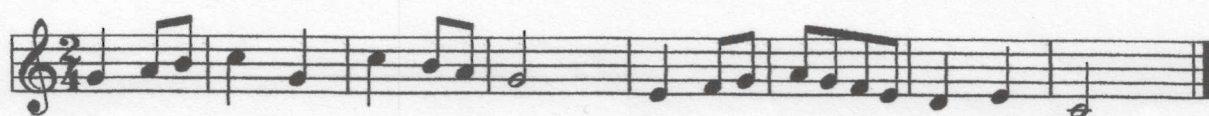
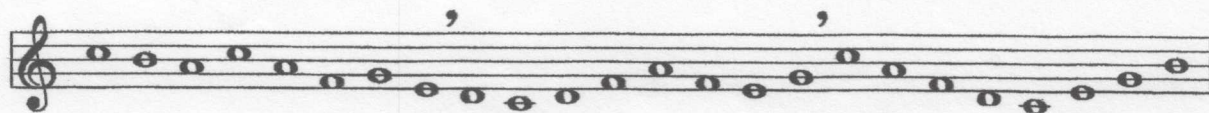
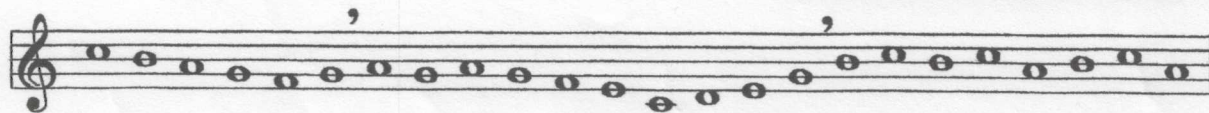
Lectura melódica



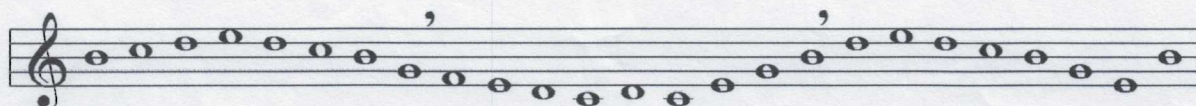
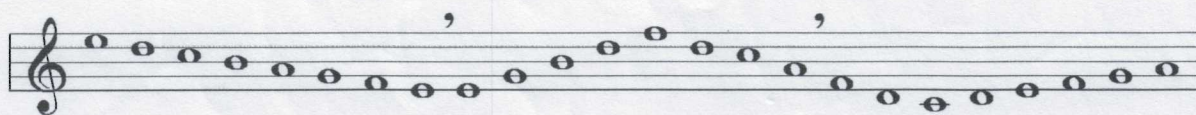
Lectura melódica



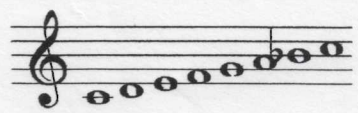
DO RE MI FA SOL LA SI DO



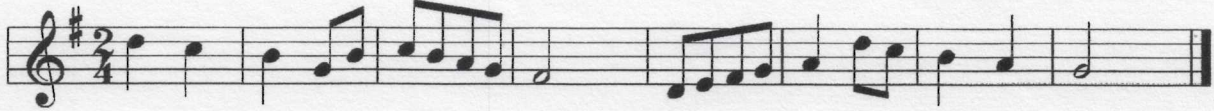
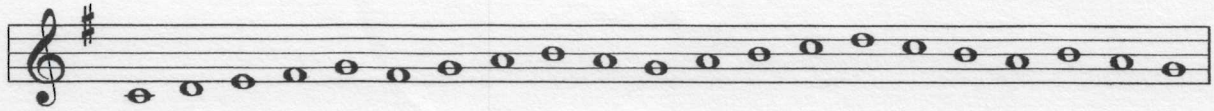
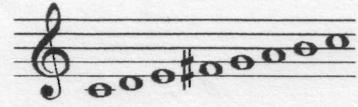
Lectura melódica



Lectura melódica



Lectura melódica



Lectura melódica

The image displays eight staves of musical notation, each containing a single melodic line. The notation is written in treble clef and 6/8 time. The first six staves are in the key of C major, while the seventh staff is in the key of D major (indicated by a sharp sign on the F line) and the eighth staff is in the key of B-flat major (indicated by a flat sign on the B line). The music consists of various rhythmic patterns, including quarter notes, eighth notes, and sixteenth notes, with some staves featuring more complex rhythmic figures like triplets and sixteenth-note runs. Each staff concludes with a double bar line.

Lectura melódica

